





---

\_\_\_\_\_













---







---









1

---

1

---

















---















---

<sup>11</sup> See Alta Planning’s project outline on page 18 of the attached PDF file ‘BMP Project Outline.’











---











1. Use Phase 3 of the Bicycle Master Plan Public Meetings as an Opportunity to Create a Political Strategy



2. Create a "Task Force" to Hold the City Accountable for the Implementation of the BMP After it's Adopted

3. Refine Political Targets Within City Government to be as Effective as Possible

#### 4. Seek to Create Unity and Alliances Both Within and Outside the Movement

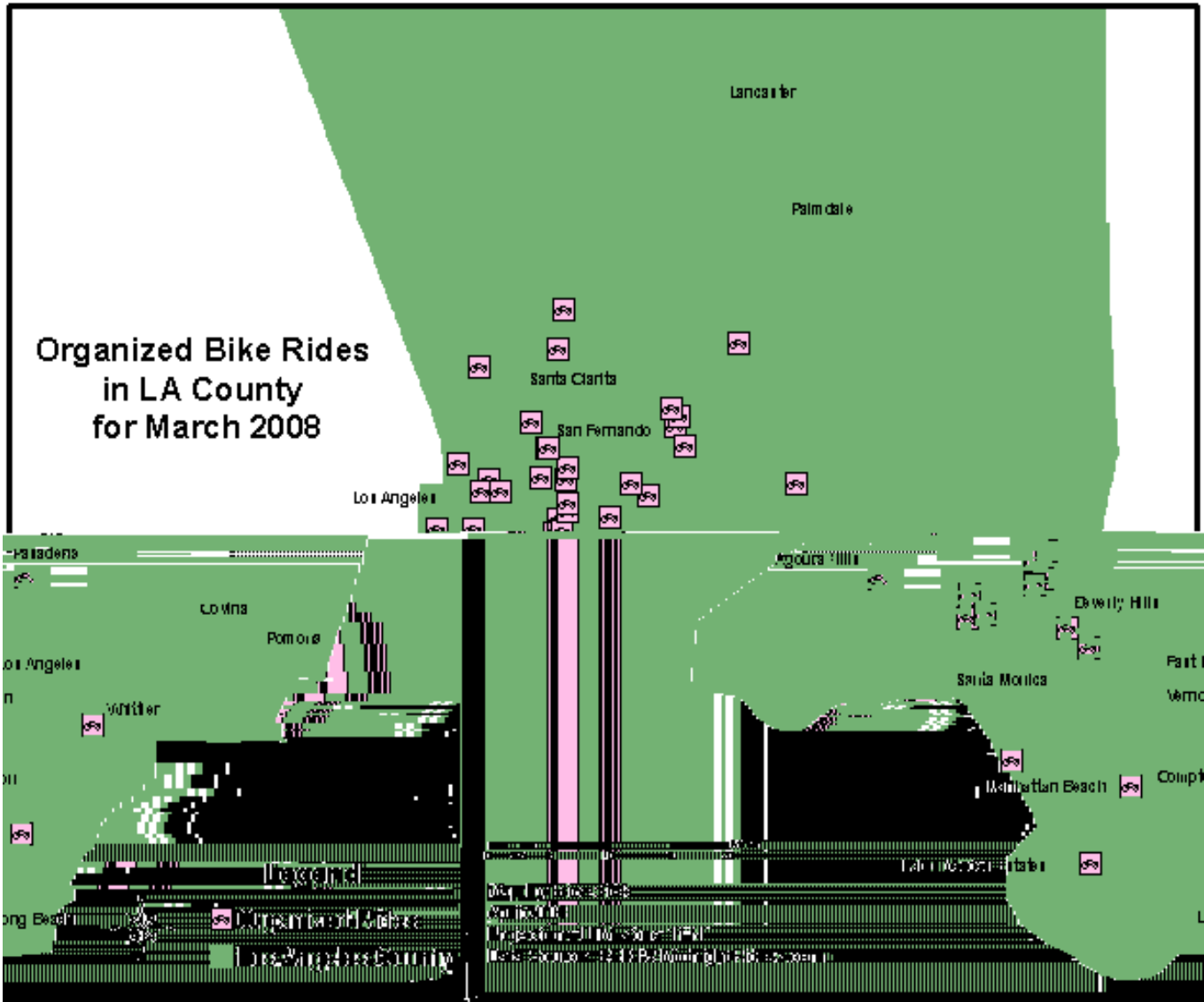


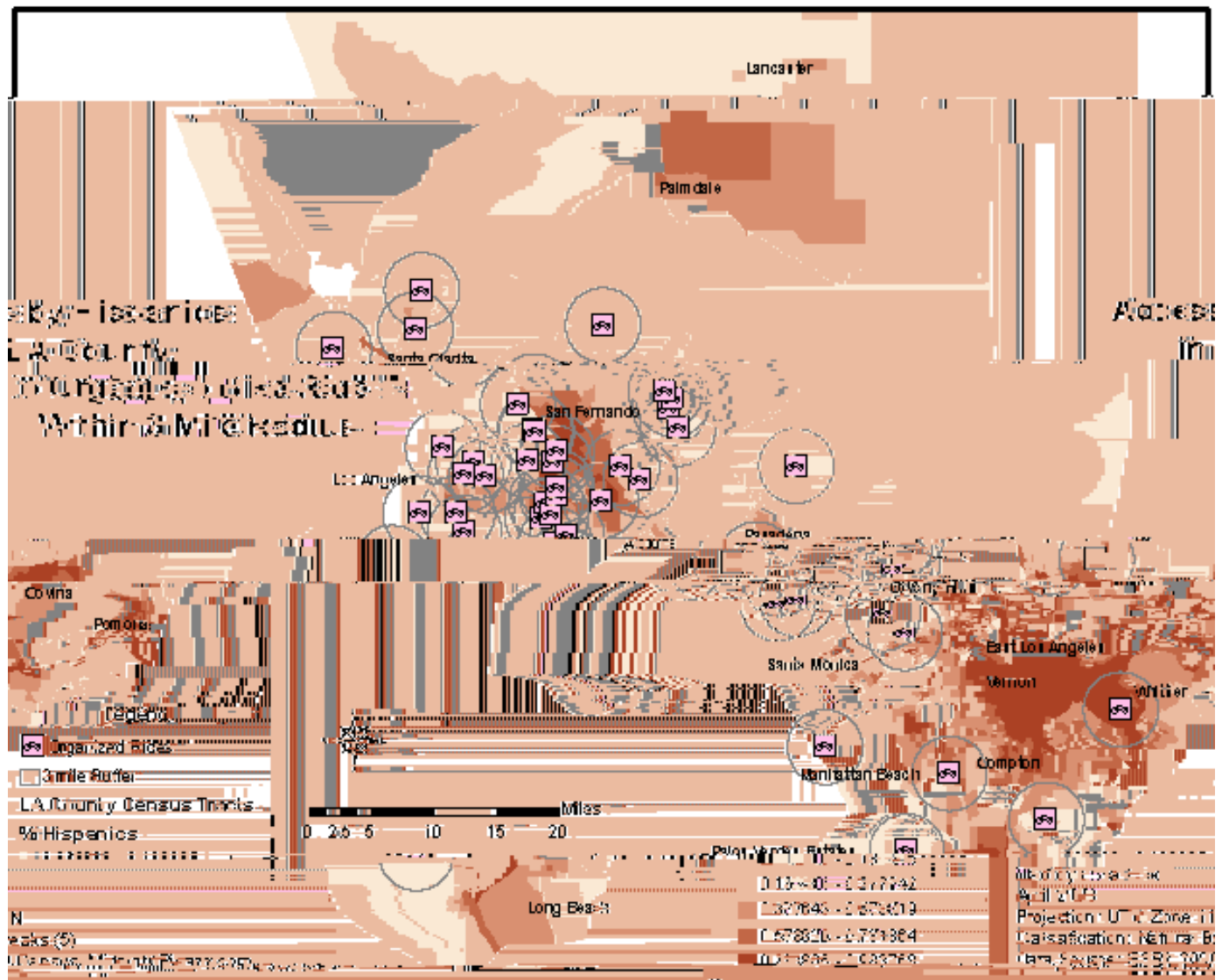
5. Create a Working and Collaborative Relationship with Cyclists, LADOT and LADOP to Help Facilitate a More Inclusive Ideology Toward Bikes in the Transportation Design and Planning

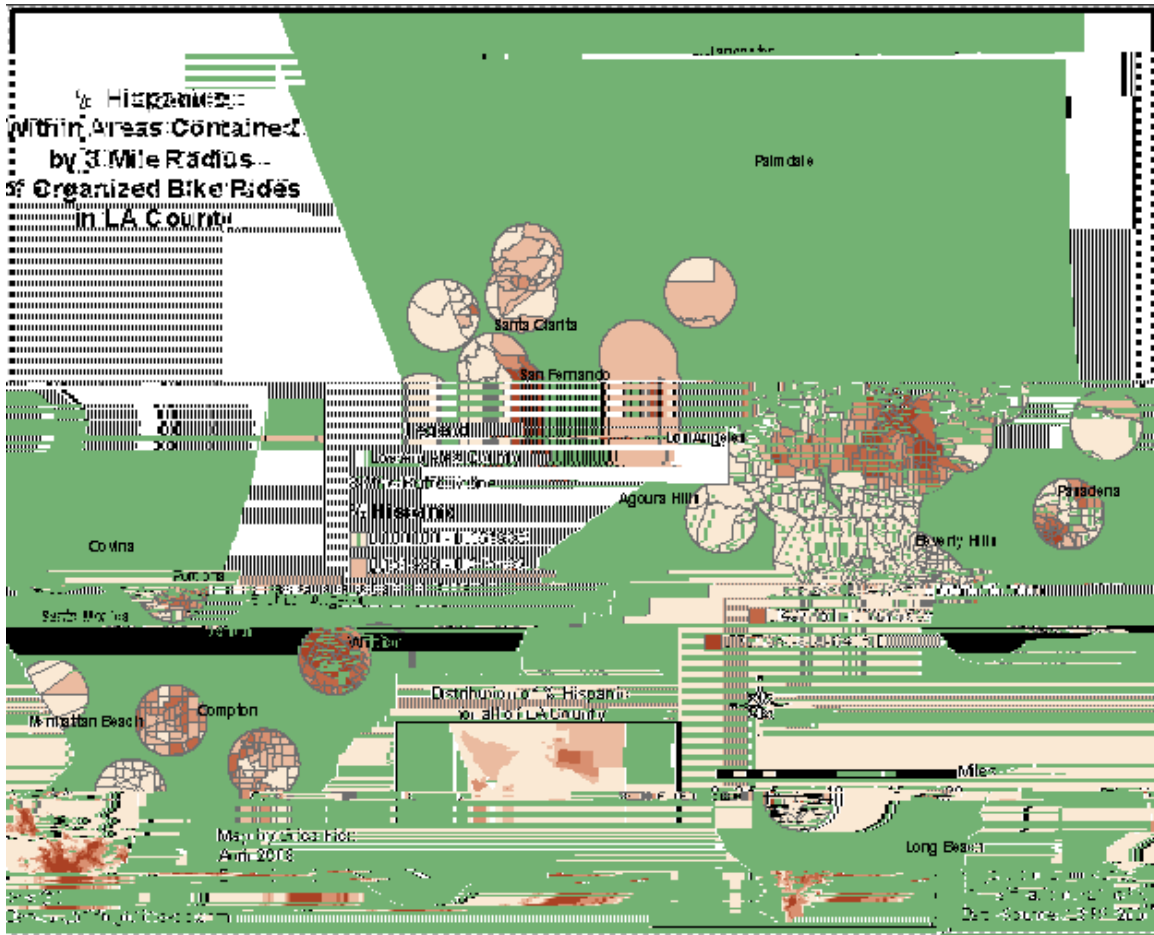




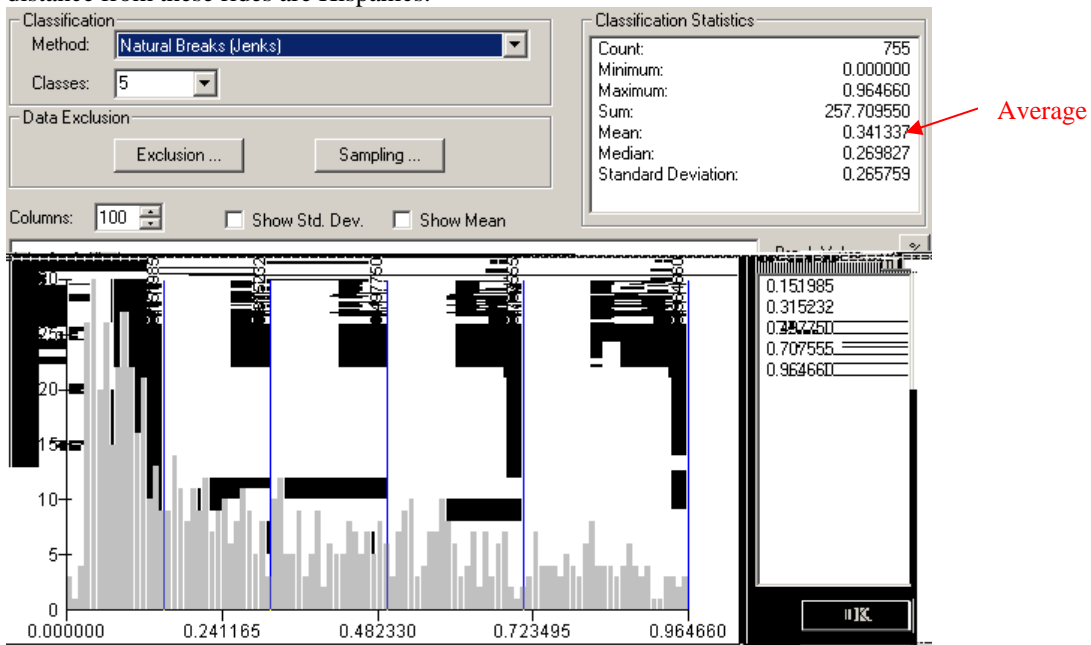




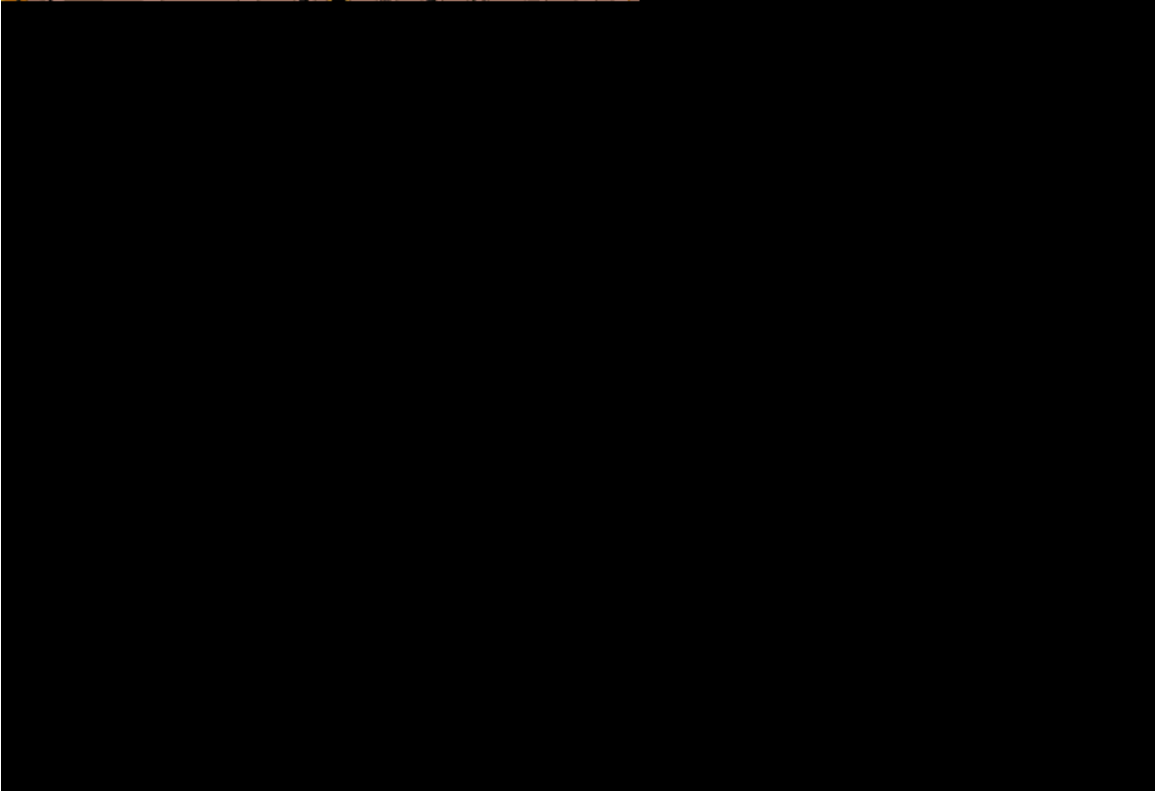




Below is a histogram of the percent Hispanics within these 3-mile radiuses. Note that the data is skewed to the left, or towards the lower percentages of Hispanics, and that the mean percentage of Hispanics for all these areas is only 34%. This means that on average, only 34% of the people living within an accessible distance from these rides are Hispanics.



---





---

---

---

---

Interviews: